



Category 6 U/UTP Cable

The ARNET Category 6 4-pair U/UTP cable is verified to exceed TIA/EIA-568-C-2 and ISO/IEC 11801 Edition 2 performance specifications.

The cable has positive ACR up to 300 MHz

Supports :

- IEEE 802.3:1000BASE-T (Gigabit Ethernet), 100BASE-TX, 10BASE-T
- 52/155 Mb/s ATM
- ANSI X3.263:100 Mb/s
- 4/16 Mb/s Token Ring
- Digital Video - IPTV, Broadband and Baseband
- Analogue video
- IEEE 802.3af DTE Power (POE)

- ▶ 4-pair U/UTP
- ▶ 24 AWG (0.51 mm) conductor diameter
- ▶ PVC or LSOH Flame-retardant jacket
- ▶ Nominal Impedance $100 \Omega \pm 15 \Omega$
- ▶ Nominal Velocity of Propagation (NVP) 0.68 (68%)

Part Number: ARC6-UTP-PVC
ARC6-UTP-LSOH

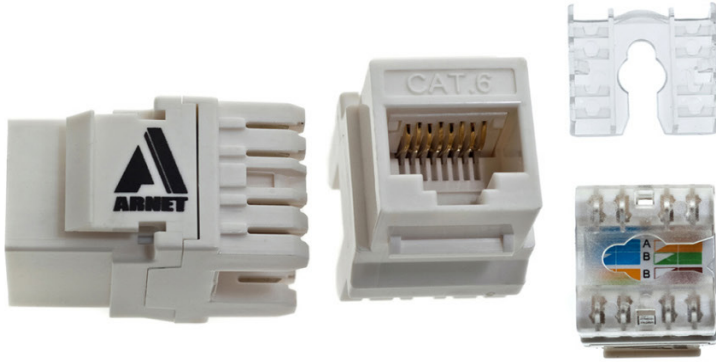


Category 6 U/UTP Patch Cords

All ARNET Category 6 patch cords are tested to TIA/EIA 568-C.2 and ISO/IEC 11801 Edition 2 standards and fully support Category 6/Class E channel performance.

- ▶ 50 micron gold-plated RJ 45 male to male T568B wiring
- ▶ 4-pair U/UTP
- ▶ 24 AWG (0.51 mm) conductor diameter
- ▶ PVC Flame-retardant jacket
- ▶ Snag-proof plug latch
- ▶ 1, 3, 5 and 10 metre lengths
- ▶ Other lengths available on request

Part Numbers: ARC6-PC-1M
ARC6-PC-3M
ARC6-PC-5M
ARC6-PC-10M



Category 6 U/UTP Keystone Module

The Category 6 Keystone Module features I10-style termination blocks presented in a 180 degree format for optimum performance. Conductors are terminated using a standard I10 punch-down tool.

Modules are in white to match the keystone faceplate.

- ▶ Fire Retardant ABS
- ▶ Gloss Bright White
- ▶ I10-style colour-coded for T568-A and T568B wiring
- ▶ Conductor capacity 22-24 AWG (0.64 - 0.4 mm)

Part Number: ARC6-KS-WHT

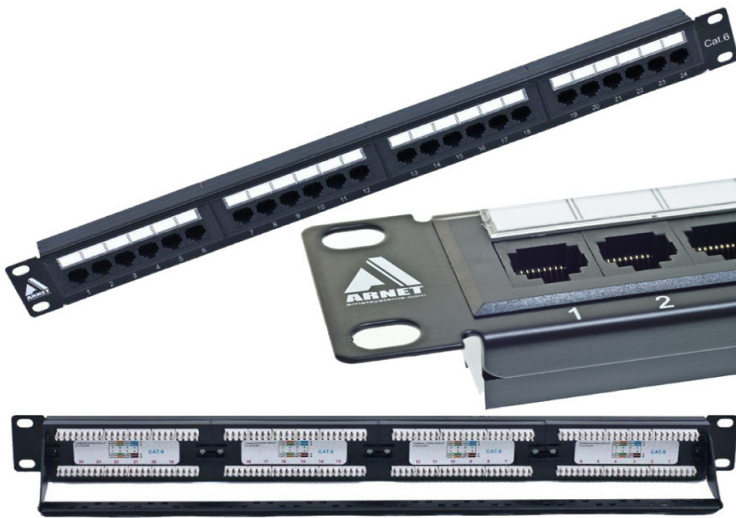


Keystone Faceplate

The UK type shuttered keystone faceplates are available in double-port styles.

- ▶ Fire Retardant ABS
- ▶ Gloss Bright White
- ▶ 86mm x 86mm
- ▶ Individually Packed

Part Number: ARC6-FP-KS-02



Category 6 U/UTP Patch Panel

Arnet Category 6 Patch panels fit industry-standard 19" racks and are available in 24 and 48 port sizes.

- ▶ 24 and 48 port versions available
- ▶ Dimensions : 24 port - 19" x 1.75" (483 x 44.5 mm)
- 48 port - 19" x 3.5" (483 x 89 mm)
- ▶ I10 and Krone-style compatible termination blocks
- ▶ Colour-coded for T568-A and T568B wiring
- ▶ Conductor capacity 22-24 AWG (0.64 - 0.4 mm)
- ▶ Includes rear cable manager bar
- ▶ Includes writable paper labelling strips

Part Numbers: ARC6-PP-24
ARC6-PP-48



Horizontal 19" Cable Manager

19" IU cable manager for supporting patch cords across the front of cabinets or racks.

- ▶ 19" x IU
- ▶ 5 x metal rings

Part Number: ARCM-MR-IU



Horizontal 19" Brush Panel

19" IU panel used with racks or cabinets when feeding patch cords from front to back, e.g. server connections. Brushes restrict bypass air-flow when used in data centre environments

- ▶ 19" x IU Cable manager with central brush

Part Number: ARCM-BRC-IU